

VTC6-220 (6V 220AH/20HR) Deep Cycle Lead Carbon Battery

VTC series lead-carbon batteries use functional activated carbon and graphene as carbon materials, which are added to the negative plate of the battery to make lead carbon batteries have the advantages of both lead-acid batteries and super capacitors. It not only improves the ability of rapid charge and discharge, but also greatly prolongs the battery life. It is well suited for PS OC applications.

**6V
220Ah**

**Carbon
Technology**

**Long Life
Battery**



COMPLIED STANDARDS

IEC 60896-21/22
YD/T799
GB/T 19638

JIS C8704
BS6290 part4
CE

Applications

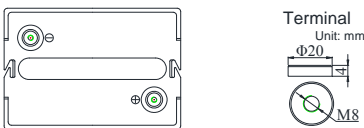
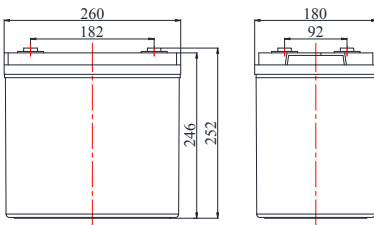
- Energy storage system
- Smart power grid and micro grids systems
- Hybrid energy storage system
- RV, golfcart and marine
- Off-grid solar systems

General Features

- Combines the characteristics of a lead acid battery and super capacitor
- Long cycle life design, excellent PSoc and cyclic performance
- High power output, rapid charging and discharging
- Unique grid and lead pasting design
- Extreme temperature tolerance

Dimensions & Weight

Length(mm/inch)	260/10.24
Width(mm/inch)	180/7.09
Height(mm/inch)	247/9.72
Total Height(mm/inch)	252/9.92
Weight(kg/lbs)(±3%)	30.3/66.79



Technical Specifications

Nominal Voltage		6V (3 cells per unit)
Design Floating Life @ 25°C		20 Years
Nominal Capacity @ 25°C	20 hour rate@11.0A, 5.4V	220Ah
Capacity @ 25°C	10 hour rate (19.8A, 5.4V)	198Ah
	5 hour rate (35.0A, 5.25V)	175Ah
	1 hour rate (127.1A, 4.8V)	127.1Ah
Internal Resistance	Full Charged Battery@ 25°C	≤2.9mΩ
Ambient Temperature	Discharge	-30°C~60°C
	Charge	-30°C~60°C
	Storage	-30°C~60°C
Max.Discharge Current @ 25°C		2050A(5s)
Capacity affected by Temperature (10 hour)	40°C	108%
	25°C	100%
	0°C	90%
	-15°C	70%
Self-Discharge@25°C per Month		3%
Charge (Constant Voltage) @ 25°C	Standby Use	Initial Charging Current Less than 51.3A Voltage 6.8-6.9V
	Cycle Use	Initial Charging Current Less than 51.3A Voltage 7.2-7.45V

Battery Discharge Table

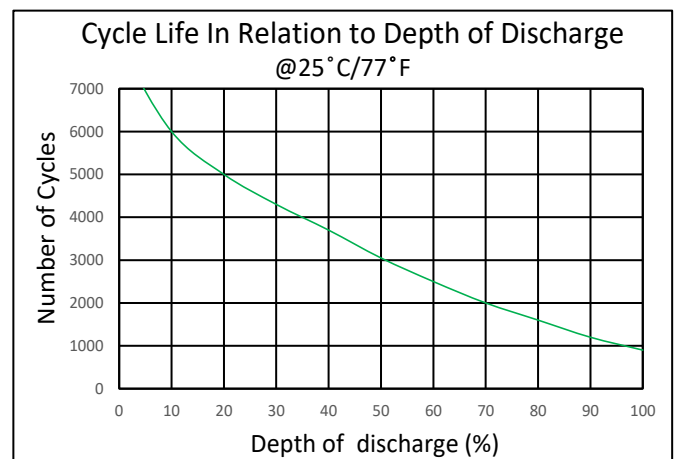
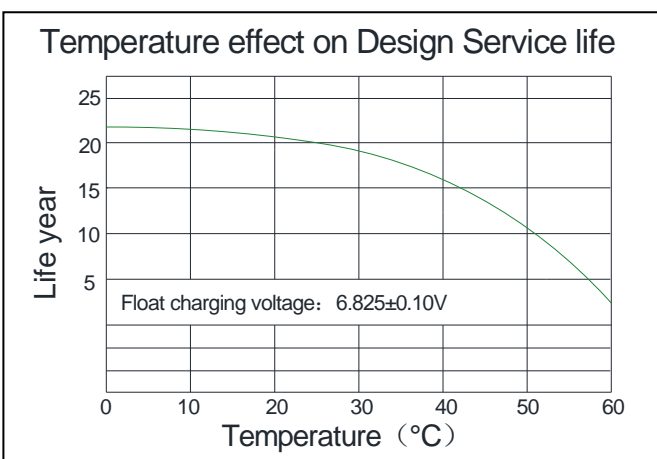
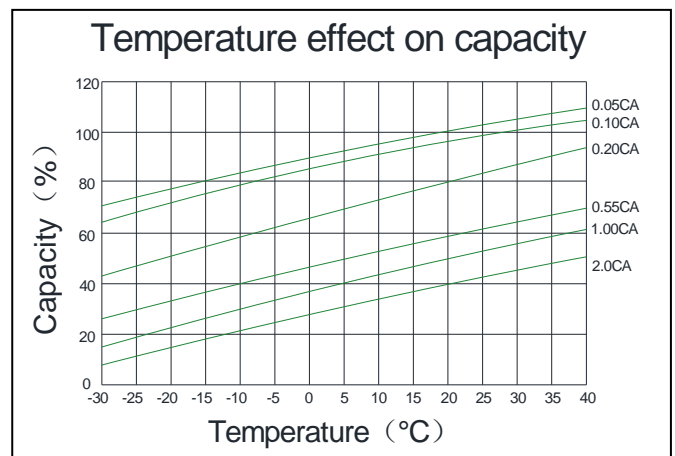
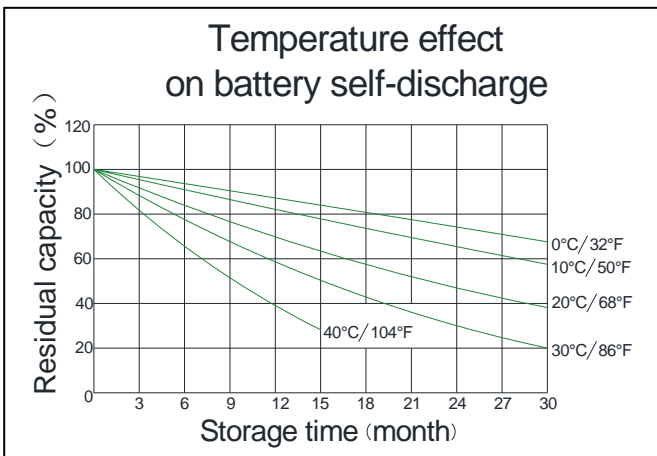
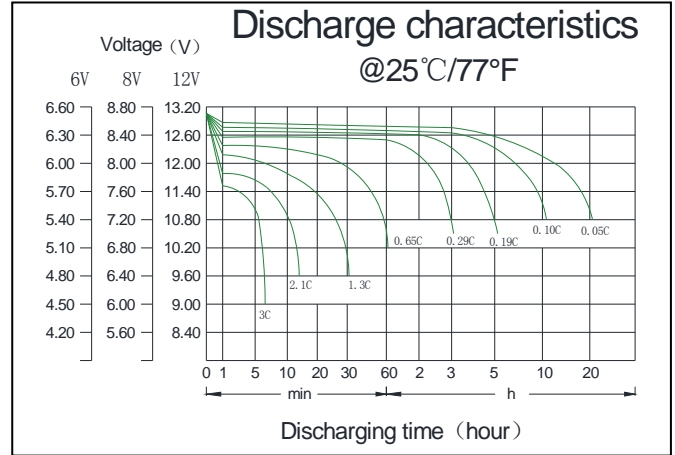
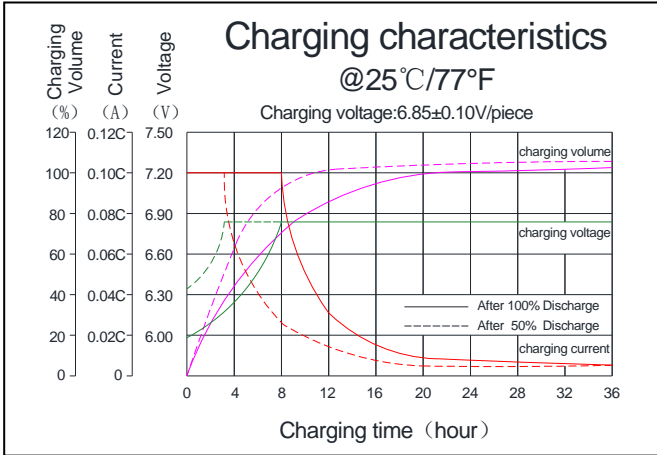
Discharge Constant Current per Cell (Amperes at 25°C)

F.V/Time	15min	30min	45min	1h	2h	3h	5h	8h	10h	20h	100h
1.60V	343.6	204.5	145.2	127.1	77.6	54.5	37.0	24.4	21.8	11.9	2.64
1.65V	337.4	200.8	142.6	124.7	76.2	53.5	36.4	24.0	21.4	11.7	2.59
1.70V	331.1	197.1	139.9	122.4	74.7	52.5	35.7	23.6	21.0	11.4	2.54
1.75V	324.9	193.3	137.3	120.1	73.3	51.5	35.0	23.1	20.6	11.2	2.49
1.80V	312.4	185.9	132.0	115.5	70.5	49.5	33.7	22.2	19.8	11.0	2.44

Discharge Constant Power per Cell (Watts at 25°C)

F.V/Time	15min	30min	45min	1h	2h	3h	5h	8h	10h	20h	100h
1.60V	661.5	393.6	279.5	244.6	149.3	104.8	71.3	47.1	41.9	22.9	5.08
1.65V	649.5	386.5	274.4	240.1	146.6	102.9	70.0	46.2	41.2	22.4	4.98
1.70V	637.5	379.3	269.3	235.7	143.9	101.0	68.7	45.3	40.4	22.0	4.89
1.75V	625.4	372.2	264.3	231.2	141.2	99.1	67.4	44.5	39.6	21.6	4.79
1.80V	601.4	357.9	254.1	222.3	135.7	95.3	64.8	42.8	38.1	21.2	4.70

Performance Characteristics



Battery Construction

Component	Positive Plate	Negative Plate	Container & Cover	Safety Valve	Terminal	Separator	Electrolyte	Pillar Seal
Features	Rare earth alloy grid with good corrosion resistance	Unique anode formula, high purity material, low self-discharge rate	Fire resistant ABS (UL94-V0 optional)	Flame Si-Rubber and aging resistant	Female Copper Insert M8	AGM separator with organic fiber, longer service life	Gradual change gel electrolyte (with patent) /Carbon	Anti-corrosion elastic O ring, two layers epoxy seal technology